



Sailing Instructions (SI)

GKSS Vårregatta

Dates: 2022 0514 – 2022 0515

Location: Långedrag, Göteborg

Boatclass: Dragon, The regatta has a WS grade 2 classification.

Organizing authority: GKSS. Gothenburg Royal Yacht Club

The notation '[NP]' in a rule of the sailing instructions (SIs) means that a boat may not protest another boat for breaking that rule. This changes RRS 60.1(a).

1. Rules

- 1.1 The event is governed by the rules as defined in The Racing Rules of Sailing (RRS).
- 1.3 All boats may be required to display advertising chosen and supplied by the organizing authority.
- 1.4 **(DP) (NP)** RRS 40.1 will apply at all times while the boat is afloat and on the water. However, it does not apply on a keelboat when it is moored or when the competitor is below deck. A boat breaking this rule may be warned or penalized at the discretion of the protest committee.
- 1.5 **(DP)(NP)** The racing areas will be bounded by course limits. A boat passing the course limit may be warned or penalised at the discretion of the protest committee.
- 1.6 RRS P2.1 is changed so that the Two-Turns Penalty is replaced by the One-Turn Penalty.

2 CHANGES TO SAILING INSTRUCTIONS

- 2.1 Any change to the sailing instructions will be posted before 0900 on the day it will take effect, except that any change to the schedule of races will be posted by 2000 on the day before it will take effect.

3 COMMUNICATIONS WITH COMPETITORS

- 3.1 Notices to competitors will be posted on the official notice board located at GKSS Clubhouse.
- 3.2 The race office is located at GKSS Clubhouse.
- 3.3 On the water, the race committee intends to monitor and communicate with competitors on VHF radio channel 8.
- 3.5 **[DP]** From the first warning signal until the end of the last race of the day], except in

an emergency, a boat shall not make voice or data transmissions and shall not receive voice or data communication that is not available to all boats.

4 CODES OF CONDUCT

4.1 [DP] Competitors and support persons shall comply with reasonable requests from race officials.

5 SIGNALS MADE ASHORE

5.1 Signals made ashore will be displayed at the flagpole outside GKSS Clubhouse

5.2 When flag AP is displayed ashore, '1 minute' is replaced with 'not less than 30 minutes' in Race Signals AP, when the race area is signalled to be the "outer area", the value is not less than 60 minutes.

6 SCHEDULE

6.1 Friday 13/5

Registration 17.00 – 20.00

Saturday 14/5

Race Office Registration 08.00 – 10.00

Skippers meeting 10.00

First start 12.00

Simple after sail on arrival to harbor.

Sunday 15/5

First start 11.00

Price Giving As soon as possible after arrival to harbor

No races will be started after 15.00

6 races are scheduled during the regatta.

6.3 The scheduled time of the warning signal for the first race on Saturday is 11.55 and on Sunday 10.55.

6.4 To alert boats that a race or sequence of races will begin soon, the orange starting line flag will be displayed with one sound at least five minutes before a warning signal is made.

6.5 On the last scheduled day of racing no warning signal will be made after 14.55

7 CLASS FLAGS

7.1 The class flag for Dragons is **D**

8 RACING AREA

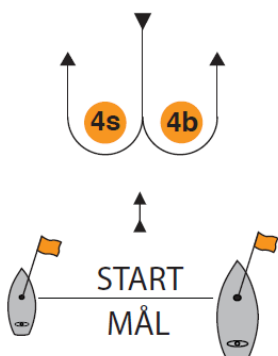
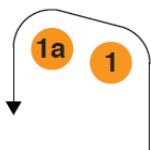
8.1 The racing areas are:

Red area immediately outside GKSS Harbour. The area will be signalled by a red flag on the flagpole. The area and the course limitations are shown in SI Appendix a.

Yellow area between the two main shipping lines to Göteborg harbour. The area will be signalled by a yellow flag on the flagpole. The time from lowering AP ashore is changed to at least 60 min. The area and the course limitations are shown in SI Appendix b.

- 9 COURSE The course shall be sailed in two laps. The gate 4s,4b does not have to be passed on the finishing leg.

The race committee may decide for a 3 laps course by displaying flag **T** with the warning signal.



9.1

10 MARKS

- 10.1 The marks are: 1, 1a, 4s, 4b all **yellow cylinders**. The start and finish line is between the orange flag on the committee boat and a red flag buoy on the port side of the line.

11 COURSE LIMITATIONS

- 11.1 The course limitations are shown in SI Appendix a and b.

12 THE START

- 12.1 Races will be started using RRS 26 with the warning signal made 5 minutes before the starting signal.
- 12.7 A boat that does not start within 5 minutes after her starting signal will be scored Did Not Start without a hearing. This changes RRS A5.1 and A5.2.

15 PENALTY SYSTEM

- 15.2 RRS 44.1 is changed so that the Two-Turns Penalty is replaced by the One-Turn Penalty.

16 TIME LIMITS [AND TARGET TIMES]

- 16.1 The Mark 1 Time Limit, Race Time Limit (see RRS 35), and the Finishing Window are shown in the table below.

Mark 1 Time Limit	Race Time Limit	Finishing Window
<i>20 min</i>	<i>60 min</i>	<i>10 min</i>

- 16.2 If no boat has passed the first mark within the Mark 1 Time Limit, the race will be abandoned.
- 16.3 The Finishing Window is the time for boats to finish after the first boat sails the course and finishes. Boats failing to finish within the Finishing Window, and not subsequently retiring, penalized or given redress, will be scored Time Limit Expired (TLE) without a hearing. A boat scored TLE shall be scored points for the finishing place [one][two] more than the points scored by the last boat that finished within the Finishing Window. This changes RRS 35, A5.1, A5.2 and A10.
- 16.4 Failure to meet the Target Time will not be grounds for redress. This changes RRS 62.1(a).

17 HEARING REQUESTS

- 17.1 The protest time limit is 30 minutes after the last boat reach harbour. The time will be posted on the official notice board.
- 17.4 A list of boats that have been penalized for breaking RRS 42 under Appendix P will be posted.

18 SCORING

- 18.1 The scoring system follows RRS Appendix A
- 18.2 1 race is required to be completed to constitute a series.
- 18.5 (a) When fewer than 4 races have been completed, a boat's series score is the total of her race scores.
- (b) When more than 3 races have been completed, a boat's series score is the total of her race scores excluding her worst score.

- 18.6 Rule A5.3 applies.

19 SAFETY REGULATIONS

- 19.2 [DP] A boat that retires from a race shall notify the race committee at the first reasonable opportunity.

20 REPLACEMENT OF CREW OR EQUIPMENT

- 20.1 [DP] Substitution of competitors is not allowed without prior written approval of the race committee.
- 20.2 [DP] Substitution of damaged or lost equipment is not allowed unless authorized in writing by the race committee. Requests for substitution shall be made to the

committee at the first reasonable opportunity, which may be after the race.

21 EQUIPMENT AND MEASUREMENT CHECKS

21.1 A boat or equipment may be inspected at any time for compliance with the class rules, notice of race and sailing instructions.

21.2 [DP] When instructed by a race official on the water, a boat shall proceed to a designated area for inspection.

25 TRASH DISPOSAL

25.1 Trash may be placed aboard official [or support person] vessels.

29 PRIZES

29.1 1 Prize will be given for each 5 starting boats

30 RISK STATEMENT

30.1 RRS 3 states: 'The responsibility for a boat's decision to participate in a race or to continue to race is hers alone.' By participating in this event each competitor agrees and acknowledges that sailing is a potentially dangerous activity with inherent risks. These risks include strong winds and rough seas, sudden changes in weather, failure of equipment, boat handling errors, poor seamanship by other boats, loss of balance on an unstable platform and fatigue resulting in increased risk of injury. **Inherent in the sport of sailing is the risk of permanent, catastrophic injury or death by drowning, trauma, hypothermia or other causes.**

31 INSURANCES

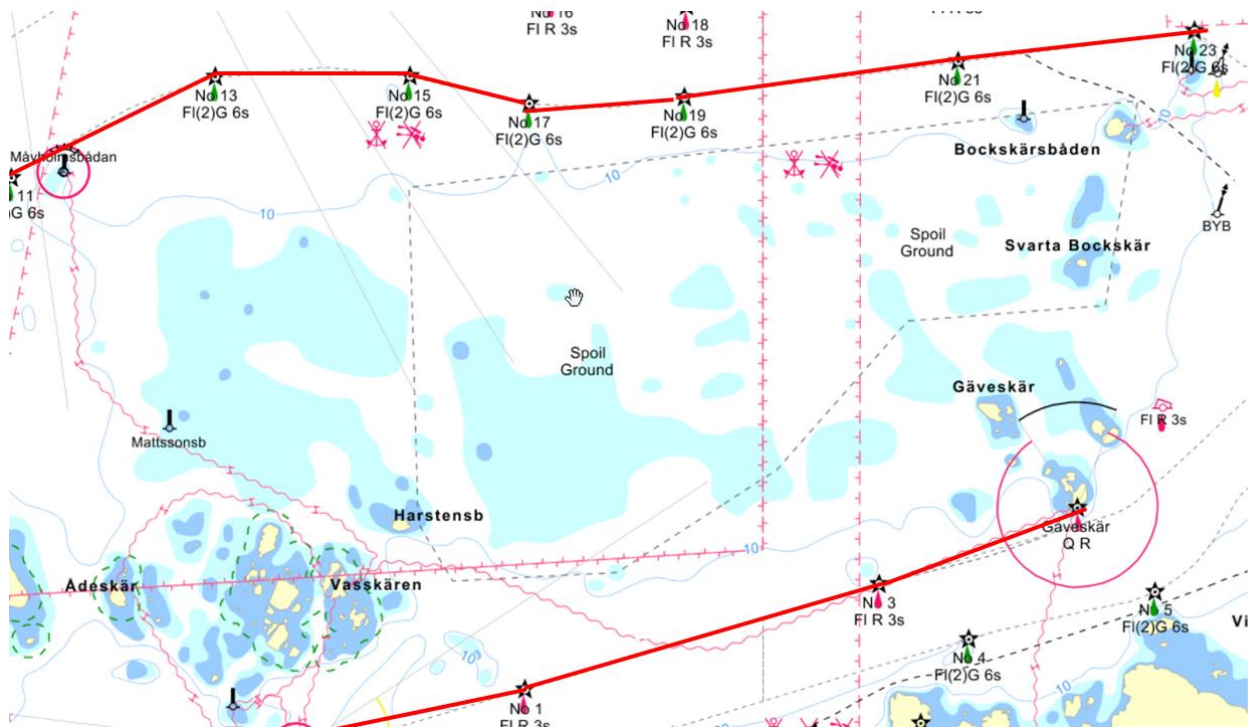
31.1 Each participating boat shall be insured with valid third-party liability insurance.

Appendix A: Race area red



The course limitation is a line between the shipping lane markers and its continuation.

Appendix B Race are yellow



The course is limited on the north and south side by lines between the shipping lane markers.