



BMW Dragon Gold Cup

5th – 13th August 2010

Royal Gothenburg Yacht Club

Marstrand - Sweden

SAILING INSTRUCTIONS

1 Rules

- 1.1 This event will be governed by the ‘rules’ as defined in the Racing Rules of Sailing (RRS).
- 1.2 The Dragon Gold Cup Rules will apply.
- 1.3 The Rules of “The Dragon Gold Cup Corinthian Trophy, Deed of Gift – March 2010” will apply (See attachment D).
- 1.4 The Rules of “Borge Borresen Memorial Trophy” will apply (See attachment D).
- 1.5 The Rules of “Nations Cup, Deed of Gift May 2000 (Amended Deed of Gift August 2009) will apply (See attachment D).
- 1.6 If there is a conflict between languages the English text will take precedence.

2 Additional Identification

While racing, boats shall display bow numbers. The OA will supply the numbers and the instructions for their use.

3 Entries

Only boats for which a signed entry form has been received, registration and measurement have been completed and the relevant entry fee has been paid before the warning signal for the first race, are eligible to race.

4 Notices to Competitors

Notices to the competitors will be posted on the official notice board next to the race office.

5 Changes to Sailing Instructions

Any change to the sailing instructions will be posted before 09.00 on the day it will take effect, except that any change in the schedule of races will be posted before 19.00 on the day before it will take effect.

6 Signals Made Ashore

6.1 Signals made ashore will be displayed at the flag staff outside the race office.

6.2 Flag AP displayed means "The warning signal will be made not less than 120 minutes after flag AP is lowered." Boats are requested not to leave the harbour until flag AP is lowered. This changes Race Signal AP.

6.3 When flag Y is displayed, RRS 40 applies at all times while afloat. This changes the Part 4 preamble.

7 Schedule of races

7.1 Racing days are scheduled from Saturday, 7 August to Friday, 13 August 2010.

Day	Warning	Signal (of the day's first race)
7 Saturday	14.00	Warning of the practice race
8 Sunday	12.00	Warning of the first race
9 Monday	11.00	Warning of the day's first race
9 Monday	ASAP	Warning of the second race of the day
10 Tuesday		Lay day
11 Wednesday	12.00	Warning of the day's first race
12 Thursday	12.00	Warning of the day's first race
13 Friday	12.00	Warning of the day's race

7.2 The OA reserve the right to change the schedule and the right to sail two or more races on any day, if necessary.

7.3 When more than one race is held on the same day flag E will be displayed at the finish. The warning signal for the next succeeding race will be made as soon as practicable. To alert boats that another race will begin soon or after a long postponement an orange flag will be displayed for at least four minutes before the warning signal is displayed.

7.4 On Friday 13 August, no warning signal will be made after 15.00.

8 Racing Area

Attachment A shows the racing area.

9 The Course

9.1 The diagram in attachment B shows the course including the approximate angles between legs, the order in which marks are to be passed, and the side on which each mark is to be left, with the following exceptions as below:

- (i) Mark 1 will be approximately 2.5 nautical miles from the starting line.
- (ii) At the end of the leg mark 2 to mark 3S or P, boats shall sail between the gate marks from the direction of the previous mark rounding mark 3S to starboard or mark 3P to port.
- (iii) No later than the warning signal, the RC signal boat will display the approximate compass bearing to mark 1.
- (iiii) The course will not be shortened before mark 1 second rounding. This changes RRS 32.

9.2 Course – Windward/Leeward

- (i) Start – 1 – 2 – gate 3S or 3P – 1 – 2 - gate 3S or 3P – Finish.
- (ii) Mark 2 will be in close proximity to mark 1.
- (iii) On the first leg of the course, marks 3S and 3P will not be marks of the course.

10 Marks

10.1 Marks 1, 2, 3S and 3P will be orange inflatable cylinders.

10.2 New marks as provided in instruction 12.2 will be orange inflatable tetrahedrons.

10.3 A RC boat signalling a change of course is a mark as provided in instruction 12.3.

10.4 The starting marks will be three RC boats at each end of the starting line and in the middle of the line.

10.5 The finishing marks will be a RC boat and a buoy displaying an orange flag.

11 The Start

11.1 Races will be started using RRS 26 with the warning signal displayed at the RC boat given 10 minutes before the starting signal. The Class Flag will be flag D.

11.2 The starting line will be between a staff with an orange flag on a RC boat at the starboard end, a staff with an orange flag on the Principal RC (mid-line) boat, and between the staff on the mid-line boat and a RC boat at the port end. The mid-line boat may not be on a straight line between the starboard end and the port end.

11.3 The starting signals will be made from the Principal RC boat stationed in the middle of the starting line. Signals may be repeated from the RC boats at either end of the line, but failure to display these signals will not be grounds for redress under RRS 62.1(a).

11.4 Inner distance marks may be laid adjacent to the Principal Race Committee boat, not necessarily on the starting line, and, if laid, are starting marks for the purpose of RRS 18.1(a) and 31. If laid, the areas between these marks and the Principal Race Committee boat are restricted areas and no passing of boats is allowed.

11.5 A boat starting later than 10 minutes after her starting signal will be scored "Did not start ". This changes RRS A4.

12 Change of Position of Next Mark

12.1 The course may be changed in accordance with RRS 33.

12.2 To change the next leg of the course, the RC will lay a new mark (or move the finishing line) and remove the original mark as soon as practicable. When in a subsequent change a new mark is replaced, it will be replaced by an original mark.

12.3 Except at a gate, boats shall pass between the RC boat signalling the change of course and the nearby mark leaving the mark to port and the RC boat to starboard. This change RRS 28.1

13 The Finish

The finishing line will be between staffs displaying orange flags on the RC boat and the finishing mark..

14 Penalty System

A boat that has taken a penalty or retired under RRS 31 or 44.1 shall complete an acknowledgement form at the race office within the protest time limit.

15 Time Limit

15.1 The time limit is 5 hours, except when two races or more are scheduled in one day, then the time limit for each race is 3 hours.

15.2 Boats failing to finish within 60 minutes after the first boat finishes, or when two races in a day within 30 minutes, will be scored "Did not finish". This changes RRS 35 and A4.

15.3 If no boat has passed mark 1 first rounding within 75 minutes of the start, the race will be abandoned.

16 Protests

16.1 Protest forms are available at the race office. Protests and requests for redress shall be delivered there before the end of the protest time limit.

- 16.2 The protest time limit is 90 minutes after the last boat has finished the last race of the day or the RC signals. This time will be posted on the official notice board. The protest time also applies to protests by the RC and International Jury(IJ) and requests for redress. This changes RRS 61.3 and 62.2
- 16.3 Notices will be posted within 30 minutes of the protest time limit to inform competitors of hearings in which they are parties or named as witnesses. Hearings will be held in the GKSS' clubhouse "Korvetten" next to the race office.
- 16.4 Notice of protest by the RC or IJ will be posted to inform boats under RRS 61.1(b). By the display of such notice, competitors shall be considered adequately informed.
- 16.5 For the purposes of RRS 64.3(b) the "authority responsible" is the Measurer appointed by the OA.
- 16.6 Breaches of instructions 2, 14, 18, 21, 22, 23 and 24 will not be grounds for a protest by a boat. This changes RRS 60.1(a). Penalties for breaking these instructions or the class rules during the regatta may be less than disqualification, if the IJ so decides.
- 16.7 On the last day of a regatta a request for re-opening a hearing shall be delivered:
- (i) within the protest time limit if the party requesting reopening was informed of the decision on the previous day.
 - (ii) no later than 30 minutes after the party requesting reopening was informed of the decision on that day.
 - (iii) on the last day, within 30 minutes after the abandonment signal is displayed if racing is abandoned ashore, or within 120 minutes after the abandonment signal is displayed if abandoned afloat.
- This changes RRS 66.
- 16.8 Decisions of the IJ will be final as provided in RRS 70.4.

17 Scoring and Trophies

- 17.1 For the purposes of RRS A4.2, the number of boats entered in the series is the number of boats that are eligible to race under instruction 3.
- 17.2 A boat disqualified by BDF, DSQ, DNE and DGM shall be scored additional points: the number of boats under instruction 3 plus 10% of them. Fractions being raised to the next highest whole number. This changes RRS A4.2.
- 17.3 The event shall consist of a series of six races, none of which shall be discarded.
- 17.4 In the event of adverse weather conditions or other circumstances beyond the control of the OA the Cup may be awarded as follows:
- (i) six races are scheduled, and boat series score will be the total of her race score.

- (ii) a minimum of four races are required to constitute a championship. If at least four races are not completed, the Gold Cup and the Gold Cup Corinthian Trophies shall be returned to the Clyde Yacht Clubs' Association, and The Nations Cup Trophy will be returned to the International Dragon Association.

17.5 Prizes will be given as follows:

Daily first prize

The Dragon Gold Cup Trophy

The Dragon Gold Cup Corinthian Trophy

The Borge Borresen Memorial Trophy

The Nations Cup Trophy

GKSS' prize to the first, second and third placed boats

18 Safety Regulations

18.1 A boat that retires from a race shall notify the RC as soon as possible.

18.2 GPS tracking of individual boats will be used for safety and public media purposes and to provide displays onshore.

18.3 The following safety procedure will be followed:

- (i) Each race day one member of each crew shall personally collect and sign for their tracking device at the race office between 9-10.30.
- (ii) A boat that retires from a race shall notify the RC and return her tracking device to the race office as soon as possible or within the protest time limit. A member of the crew shall sign the returned device.
- (iii) All boats shall return the tracking device to the race office daily before end of the protest time. A member of the crew shall sign the returned device.
- (iiii) Any boat failing to comply with this procedure may be penalized 5 points for each race without a protest hearing. This change RRS 63.1 and A5.

19 Replacement of Crew

Substitution of competitors will not be allowed without prior written approval of the IJ.

20 Equipment and Measurement Checks

A boat or equipment may be inspected at any time for compliance with the Class Rules and Sailing Instructions. When instructed by the RC or Event Measurer, a boat shall proceed immediately to a designated area for inspection.

21 Support Boats

- 21.1 Support boats, (including coach, press, private and spectator boats) shall register at the race office 5 & 6 August, open each day 09.00 to 18.00, and be issued with an identity flag/sign such flag/signs shall be displayed at all times when afloat. The person in charge of the competing boat to which support boats are attached shall acknowledge the presence of a support boat on the registration form.
- 21.2 Team leader support boats, coaches and other support personnel shall stay more than 100 metres outside restricted areas and from any racing boat from the time of the preparatory signal until all boats have finished or the RC signals a postponement, general recall or abandonment.
- 21.3 Any support boats breaking instruction 21.2 shall be liable to a penalty imposed on their competing boat. Such penalty to be at the discretion of the IJ.
- 21.4 Support boats shall not pass any information by any means whatsoever to competitors which are racing (RRS 41).
- 21.5 Communication by radio (including mobile phones) is prohibited. Support boats may communicate only by voice with the boats they are registered to.
- 21.6 Competitors and support boats shall not communicate or transfer goods or equipment to or from, competing boats from the time of the preparatory signal until all boats have finished or the RC signals a postponement, general recall or abandonment.
- 21.7 At all times, support boats shall comply with directions given by the RC. This also includes when requested to do so or to help towing boats in and out safely.
- 21.8 Support boats shall maintain a listening watch on VHF Channel 24, one hour before and after racing.
- 21.9 Attachment C shows the restricted areas for support boats.

22 Haul-out Restrictions

All boats shall be afloat Saturday at 12.00 and shall not be hauled out during the regatta except with, and according to, the terms of prior written permission of the IJ.

23 Plastic Pools and Diving Equipment

Underwater breathing apparatus, plastic pools or their equivalent is prohibited.

24 Electronic Equipment

- 24.1 A boat shall neither make nor receive radio transmissions while racing. Electronic equipment other than timers and compasses permitted by the class rules shall not be carried on board except for mobile telephones which shall be switched off while racing.
- 24.2 The GPS units in instructions 18 are permitted.

25 Official Boats

- 25.1 The RC boats will display a GKSS' burgee.
- 25.2 International Jury boats will display a flag with the word "JURY".
- 25.3 Other official boats provided by the OA will display a white flag with "BMW".

26 Liability Disclaimer

Competitors participate in the regatta at their own risk. See RRS 4 "Decision to Race". The OA will not accept any liability for material damage or personal injury or death sustained in conjunction with, or prior to, or during or after the regatta.

27 Insurance

- 27.1 Each participating yacht shall be insured with valid third party liability insurance with a minimum cover of €1.000.000 per event or the equivalent.
- 27.2 Competitors are also advised to have their own personal accident insurance.

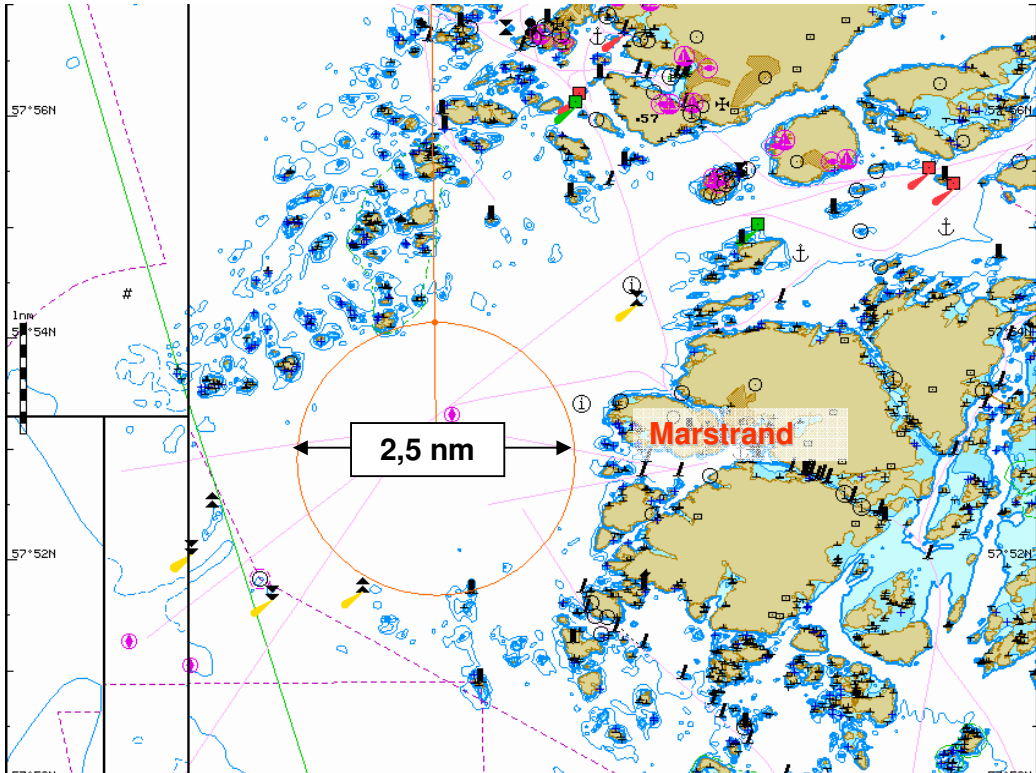
Attachment A: Location of racing area

Attachment B: The course

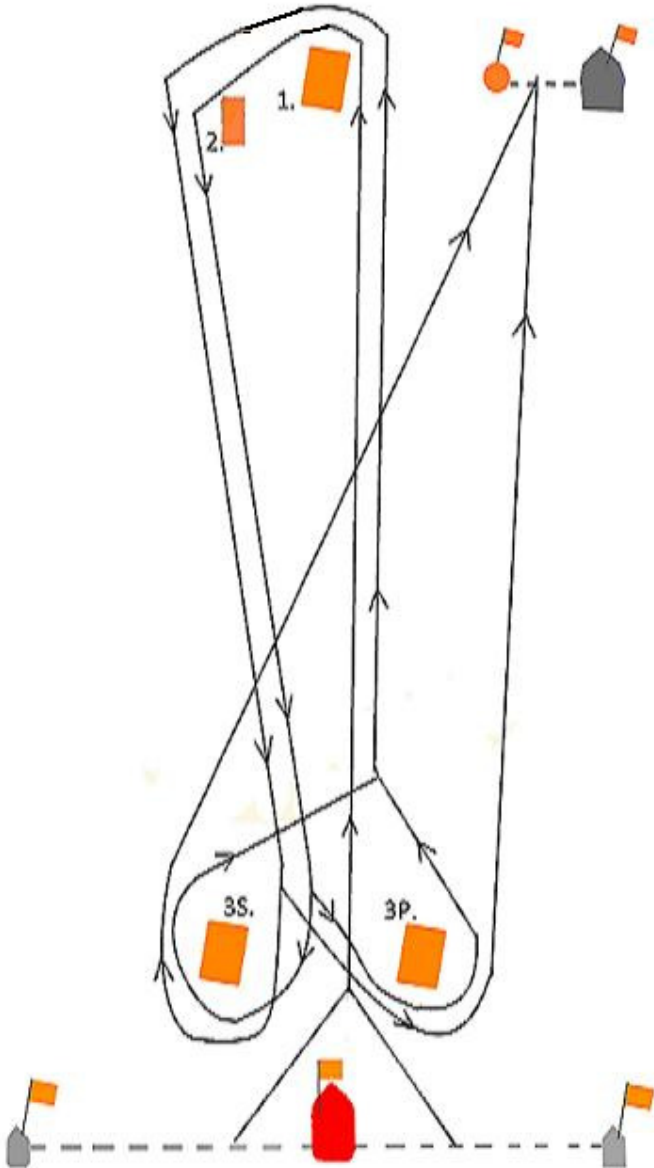
Attachment C: The location of the restricted areas for support boats

Attachment D: Rules for the Trophies

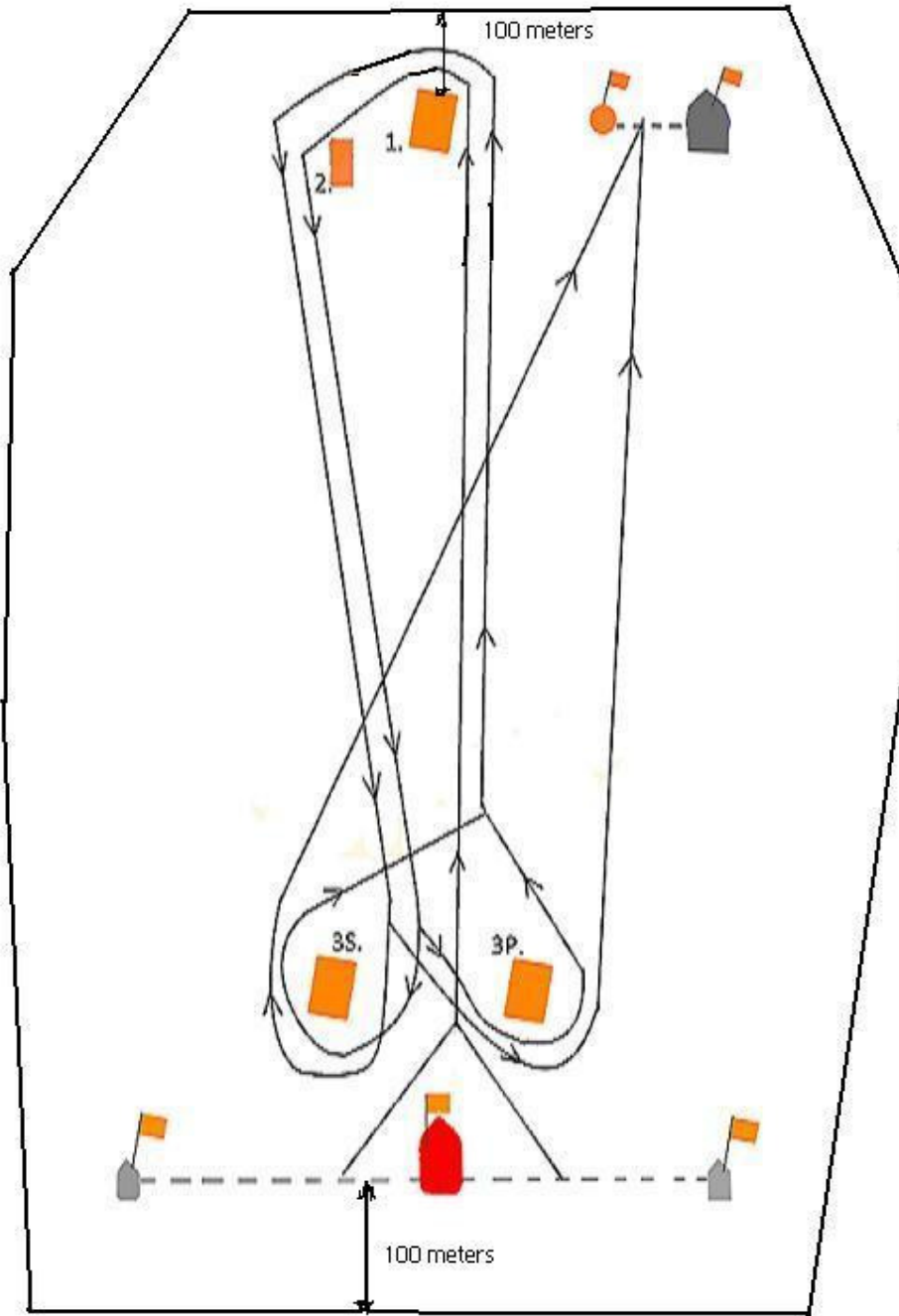
Location of racing area



The course



The location of the restricted areas for support boats



Rules for the trophies

The Dragon Gold Cup Corinthian Trophy

Deed of Gift - March 2010

1. This trophy has been presented by KSSS, the Royal Swedish Yacht Club, in honour of GKSS, the Royal Gothenburg Yacht Club, at its 150th anniversary 2010, for annual competition at the International Dragon Class Gold Cup.
2. The Trophy will remain the property of the KSSS.
3. The Trophy will be competed for annually within the Dragon Gold Cup. The winner of the Trophy each year is entitled to hold it until the next Gold Cup. In the event that the Gold Cup is not awarded in any year, the holder shall return The Trophy to the KSSS. [Note this also covers the eventuality where the Gold Cup is not presented because an inadequate number of races have been sailed].
4. In order to qualify as a competitor for the Trophy, the boat shall be crewed totally by amateur, Corinthian, sailors as defined by ISAF. At this date each sailor must be ISAF Sailor Code Classification 1.
5. The winner will be the helmsman of the winning boat in the Corinthian series of the Gold Cup. The rules and scoring will in every respect be identical to the Gold Cup except that the scoring will exclude all non qualifying boats from the results. For clarity, in each race the first Corinthian boat will score a win, the second Corinthian boat will score a second and so on.

Borge Borresen Memorial Trophy

The Borge Borresen memorial Trophy was presented in 2008 by the Borresen family in memory of Borge Borresen, who competed in 51 consecutive Gold Cups and won the event 4 times.

The trophy is presented annually to the helmsman of the Dragon that wins the first completed race of the Gold Cup.

Nations Cup

Deed of Gift – May 2000 (Updated August 2009)

The “Nations Cup” is a prize given by Thomas Muller to the International Dragon Class. The prize shall be sailed in the races of the International Dragon Gold Cup and under the same scoring system. *IDA have consulted with the donator of the Nations Cup and he expressed a preferens for “GKSS take the points scored in the full fleet and add them up for the 3 boats competing for each nation”.*

Each nation with at least 3 Dragons entered for the Gold Cup shall participate as a team. Each team shall consist of 3 Dragons with identical national letters on their sail. The first three boats from each nation in the first completed race of the Gold Cup shall form that nation’s team.

Once a team has been determined no changes are allowed under any circumstances.

The helmsman of the highest placed boat of the winning team in the last completed race shall win the Cup and keep it up to the next Gold Cup.

The Nations Cup will only be awarded if enough races have been sailed to complete the Gold Cup.